

Legend

- Brentwood Borough Boundary
- SW Flooding Hotspot Study Area
- SW Flooding Hotspots

FRISM for ASTSWF Less (<0.1-0.3m)

NRD Non Residential: Detailed Count

- 0
- 1 - 5
- 6 - 10
- 11 - 15
- 16 - 20
- 21 - 25
- 26 - 30
- 31 - 35
- 36 - 40
- 41 - 50
- 51 - 53

Rev.	Modifications	Date	Drawn	Checked	Approved



Magna House
Atherstone
Warwickshire
CV9 10DF
United Kingdom

www.jbaconsulting.com
t +44 (0)1827 722 710
f +44 (0)1827 722 719
e info@jbaconsulting.com



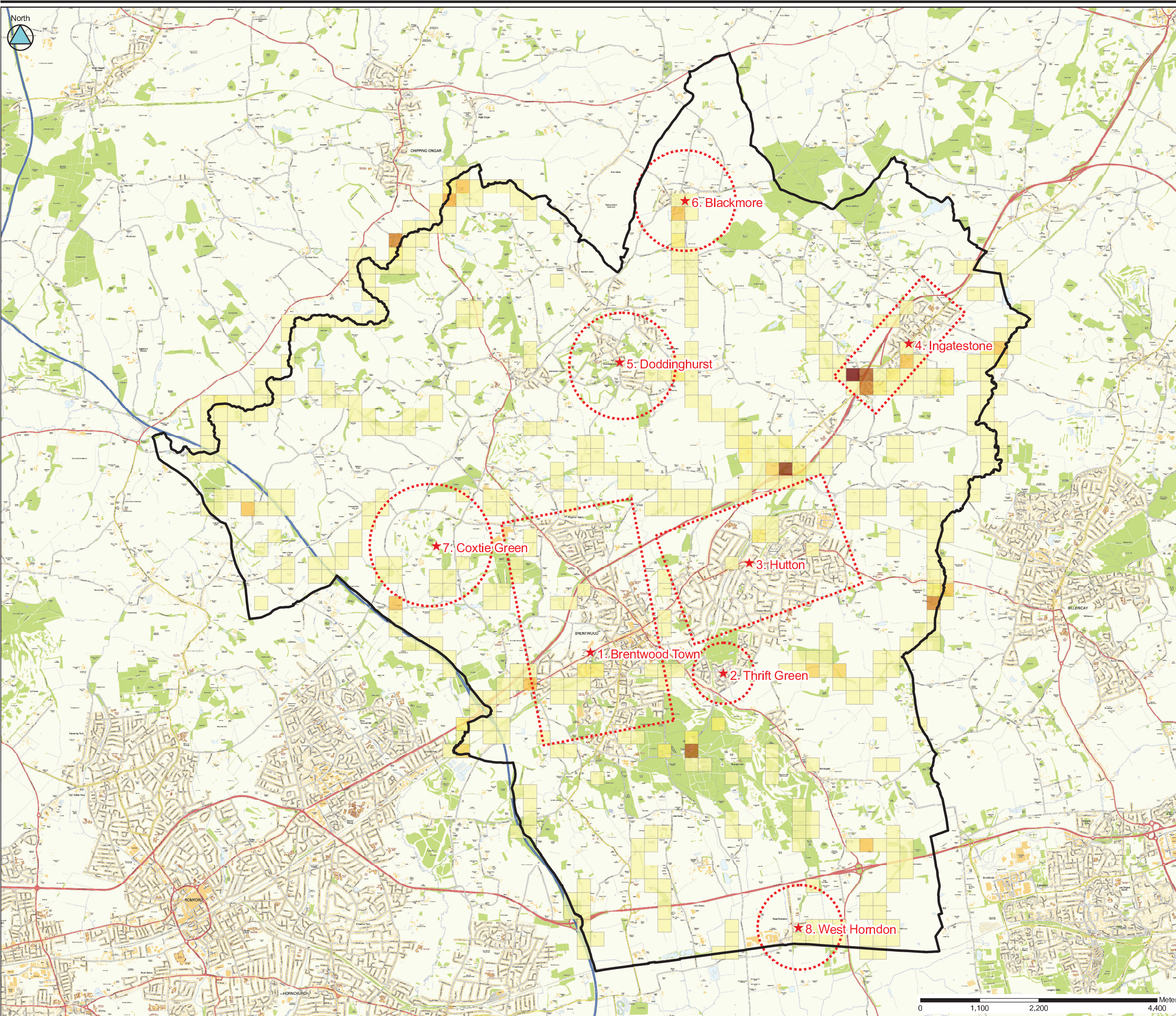
Offices at Atherstone, Doncaster, Edinburgh, Haywards Heath, Limerick, Newcastle, Newport, Salford, Skipton, Tadcaster, Thirsk, Wellingford and Warrington

for
Essex County Council
BRENTWOOD SWMP
**NUMBER OF FLOODED NON RESIDENTAL
PROPERTIES BASED ON ASTSWF (LESS) OUTLINES**

This document is the property of Jeremy Benn Associates Ltd. It shall not be reproduced in whole or in part, nor disclosed to a third party, without the permission of Jeremy Benn Associates Ltd.

Scale: 1:30,000 @ A1	Drawn	A Waite	March 2013
	Checked	D Taylor	March 2013
	Approved	D Keamey	March 2013

Digital File Name:	2012s6570-003 - Brentwood JFRISM.mxd	Status:	DRAFT
Drawing Number:	2012s6570-003	Sheet No:	1 of 1

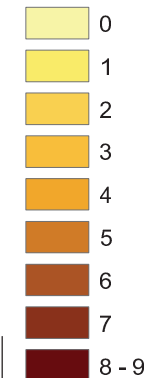


Legend

- Brentwood Borough Boundary
- SW Flooding Hotspot Study Area
- SW Flooding Hotspots

FRISM for ASTSWF More (>1.0m)

NRD_Non_Residential: Detailed Count



Rev.	Modifications	Date	Drawn	Checked	Approved

JBA
consulting

Magna House
Atherstone
Warwickshire
CV9 1DF
United Kingdom

www.jbaconsulting.com
t +44 (0)1827 722 710
f +44 (0)1827 722 719
e info@jbaconsulting.com

Offices at Atherstone, Doncaster, Edinburgh, Haywards Heath, Limerick, Newcastle, Newport, Solihull, Skipton, Tadcaster, Thirsk, Wellingford and Warrington

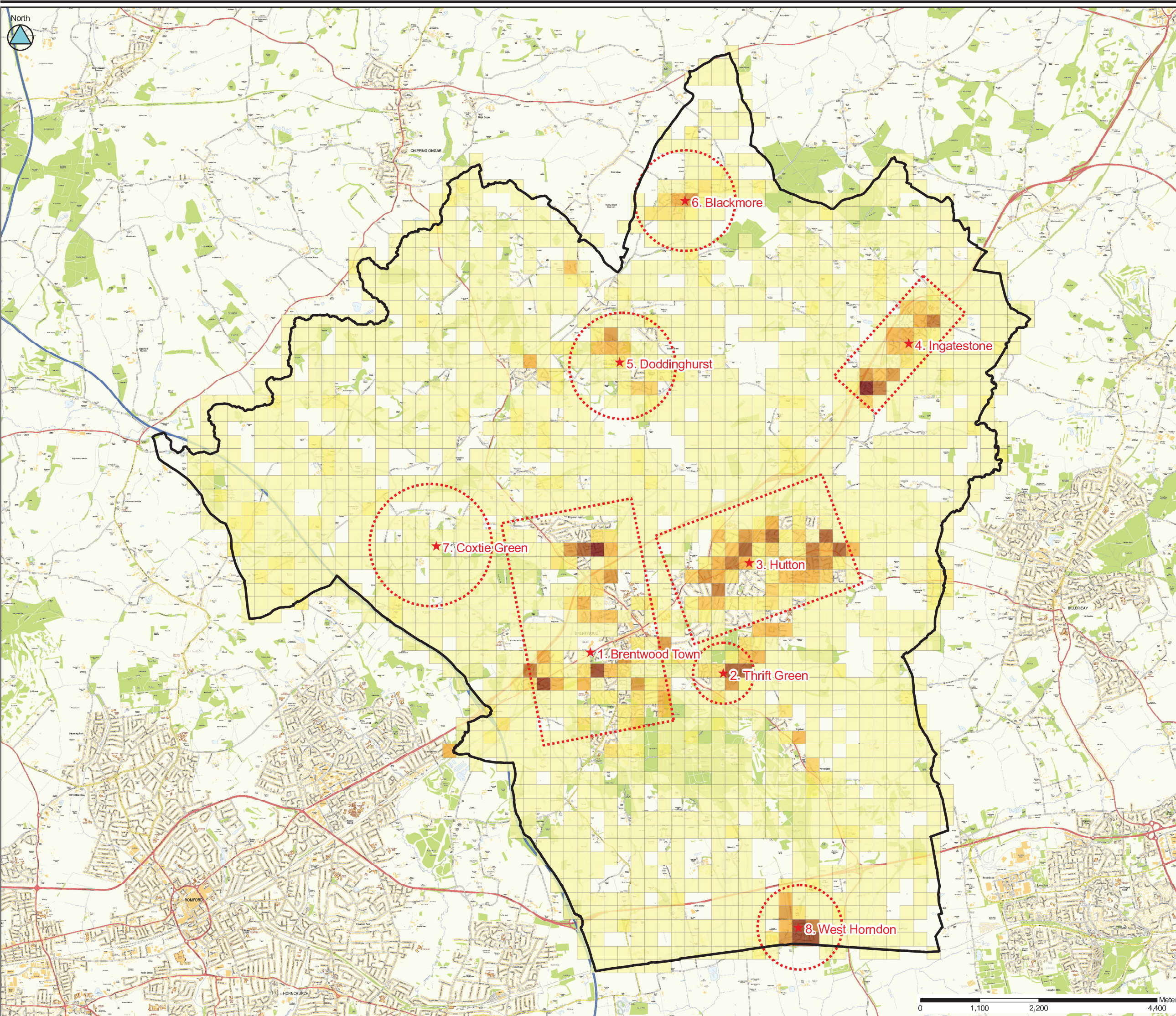
for
Essex County Council
BRENTWOOD SWMP

**NUMBER OF FLOODED NON RESIDENTAL
PROPERTIES BASED ON ASTSWF (MORE) OUTLINES**

This document is the property of Jeremy Benn Associates Ltd. It shall not be reproduced in whole or in part, nor disclosed to a third party, without the permission of Jeremy Benn Associates Ltd.

Scale:	1:30,000 @ A1	Drawn	A Waite	March 2013
		Checked	D Taylor	March 2013
		Approved	D Keamey	March 2013

Digital File Name:	2012s6570-003 - Brentwood JFRISM.mxd	Sheet No.:	1 of 1	Status:	DRAFT	Rev.:	
Drawing Number:	2012s6570-003						



Legend

- Brentwood Borough Boundary
- SW Flooding Hotspot Study Area
- SW Flooding Hotspots

FRISM for ASTSWF Less (<0.1-0.3m)

NRD Residential: Detailed Count

- 0
- 1 - 5
- 6 - 10
- 11 - 15
- 16 - 20
- 21 - 30
- 31 - 40
- 41 - 50
- 51 - 75
- 76 - 100
- 101 - 131

Rev.	Modifications	Date	Drawn	Checked	Approved

JBA
consulting

Magna House
Atherstone
Warwickshire
CV9 10DF
United Kingdom

www.jbaconsulting.com
t +44 (0)1827 722 710
f +44 (0)1827 722 719
e info@jbaconsulting.com

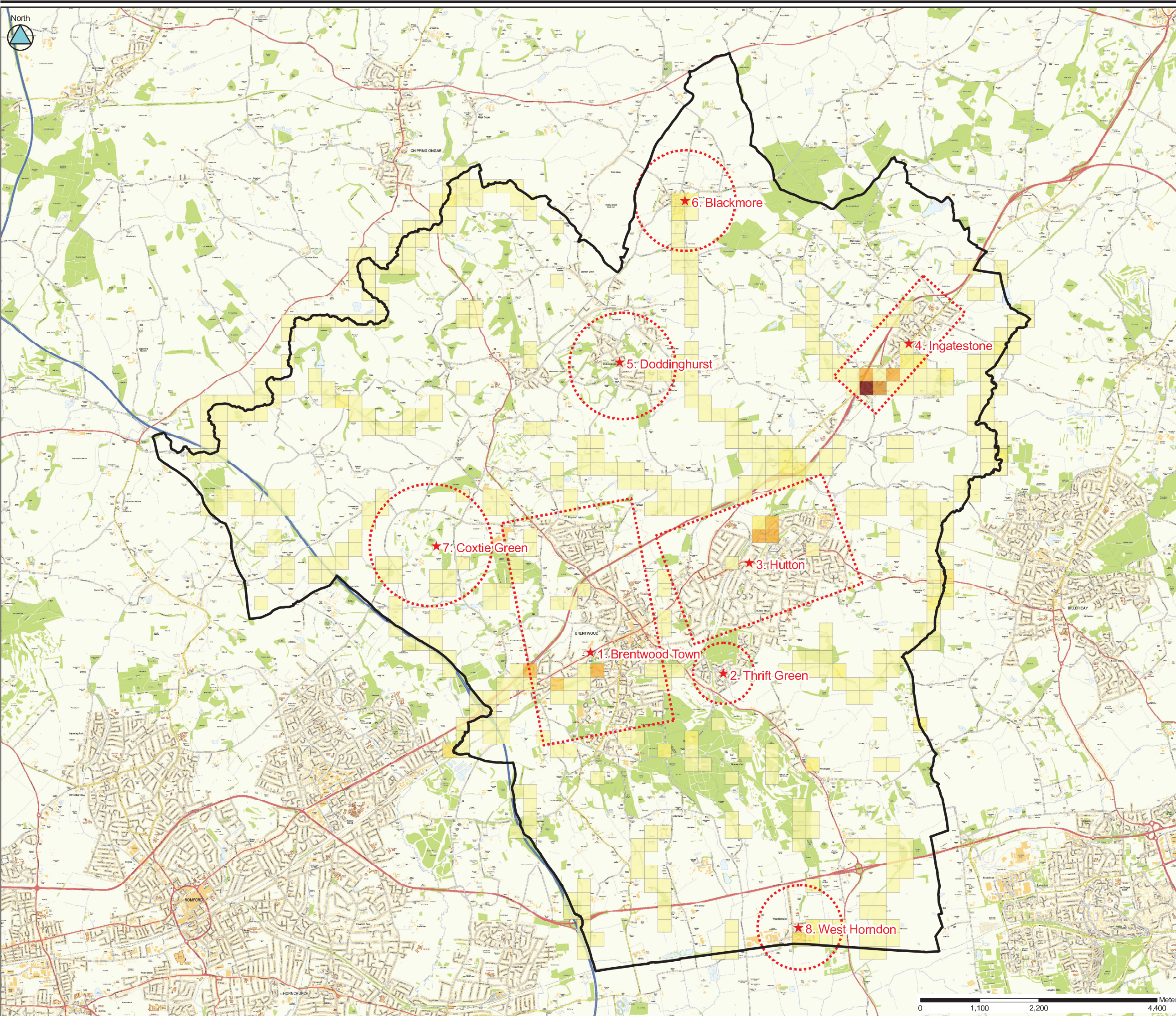
Offices at Atherstone, Doncaster, Edinburgh, Haywards Heath, Limerick, Newcastle, Newport, Salford, Skipton, Tadcaster, Thirsk, Wellingford and Warrington

for
Essex County Council
BRENTWOOD SWMP
**NUMBER OF FLOODED RESIDENTIAL PROPERTIES
BASED ON ASTSWF (LESS) OUTLINES**

This document is the property of Jeremy Benn Associates Ltd. It shall not be reproduced in whole or in part, nor disclosed to a third party, without the permission of Jeremy Benn Associates Ltd.

Scale:	1:30,000 @ A1	Drawn	A Waite	March 2013
		Checked	D Taylor	March 2013
		Approved	D Keamey	March 2013

Digital File Name:	2012s6570-003 - Brentwood JFRISM.mxd	Sheet No.:	1 of 1	Status:	DRAFT	Rev.:	
Drawing Number:	2012s6570-003						



Legend

- Brentwood Borough Boundary
- SW Flooding Hotspot Study Area
- SW Flooding Hotspots

FRISM for ASTSWF More (>1.0m)

NRD Residential: Detailed Count

- 0
- 1 - 5
- 6 - 10
- 11 - 15
- 16 - 20
- 21 - 30
- 31 - 40
- 41 - 50
- 51 - 75
- 76 - 100
- 101 - 109

Rev.	Modifications	Date	Drawn	Checked	Approved

JBA
consulting

Magna House
Atherstone
Warwickshire
CV9 10DF
United Kingdom

www.jbaconsulting.com
t +44 (0)1827 722 710
f +44 (0)1827 722 719
e info@jbaconsulting.com

Offices at Atherstone, Doncaster, Edinburgh, Haywards Heath, Limerick, Newcastle, Newport, Salford, Skipton, Tadcaster, Thirsk, Wellingford and Warrington

for
Essex County Council
BRENTWOOD SWMP
**NUMBER OF FLOODED RESIDENTIAL PROPERTIES
BASED ON ASTSWF (MORE) OUTLINES**

This document is the property of Jeremy Benn Associates Ltd. It shall not be reproduced in whole or in part, nor disclosed to a third party, without the permission of Jeremy Benn Associates Ltd.

Scale:	Drawn	A Waite	March 2013
1:30,000 @ A1	Checked	D Taylor	March 2013
	Approved	D Keamey	March 2013

Digital File Name:	2012s6570-003 - Brentwood JFRISM.mxd	Sheet No:	1 of 1	Status:	DRAFT	Rev:	
Drawing Number:	2012s6570-003						