

**TOILETS**

The adapted and accessible toilet is close to the disabled parking bays. Follow the signs and open with a radar key (also available from the café).

**REFRESHMENTS**

The café is near the main car park. It is accessible and open all year during daylight hours (typically 8am - sunset).

**OTHER FACILITIES AT KING GEORGE'S PARK**

The Crazy Golf is wheelchair accessible and open all year. Buy tickets from the golf shop. Golf clubs for use from a wheelchair are available.

The new children's play area is accessible to wheelchairs and open all year.

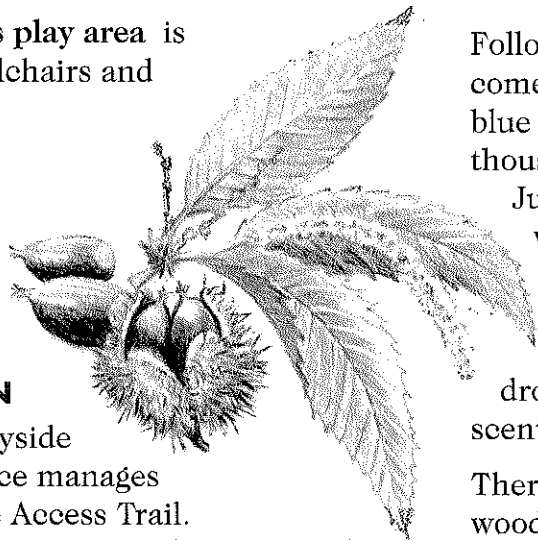
**TELEPHONES**

The nearest public phone is in the café.

**FURTHER INFORMATION**

Brentwood Countryside Management Service manages Hartswood and the Access Trail. The Countryside Manager can be contacted on 01277 261111 extension 503.

The Parks Department manages King George's Park and other facilities and can be contacted on 01277 261111 extension 520.



**H**ARTSWOOD is one of the oldest woodlands in Brentwood, with written records dating back to the 7th century when it was owned by Barking Abbey.

It is protected for its wildlife, in particular the insect life. Look out for the large mound shaped nests made by wood ants - they can reach several feet wide. The ants often march across the path in ranks and can be found gathering sticky sap from tree trunks. There are also many green woodpeckers in Hartswood as wood ants are one of their favourite foods! Listen for their loud, laughing call giving the bird its other name of "yaffle".



Wood ants  
(actual size)

Follow the green route in May and you will come across a mass of bluebells. A sea of blue will lap at your feet as the scent of thousands of flowers washes over you. In June you may find an even rarer woodland flower, the lily-of-the-valley. This plant only grows wild in a few ancient woodlands such as Hartswood.

Hunt them out; the flowers are are droplets of white with a gloriously sweet scent.

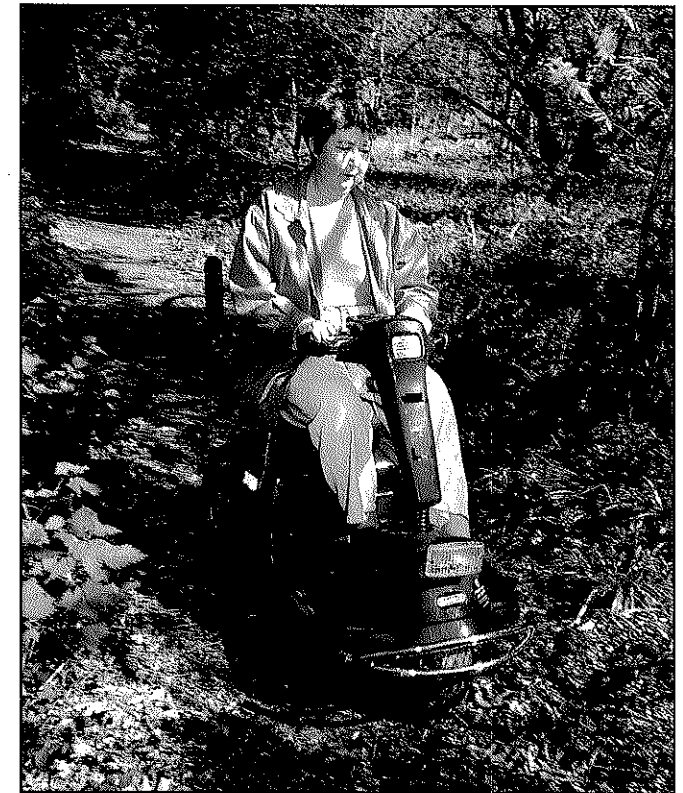
There are several sweet chestnut trees in the wood. The Romans brought the trees with them for food, so follow in their foot-steps and gather the nuts in October!

*Rest for a while under the magnificent beech tree.*



# HARTSWOOD

## Access Trail



BRENTWOOD  
BOROUGH COUNCIL



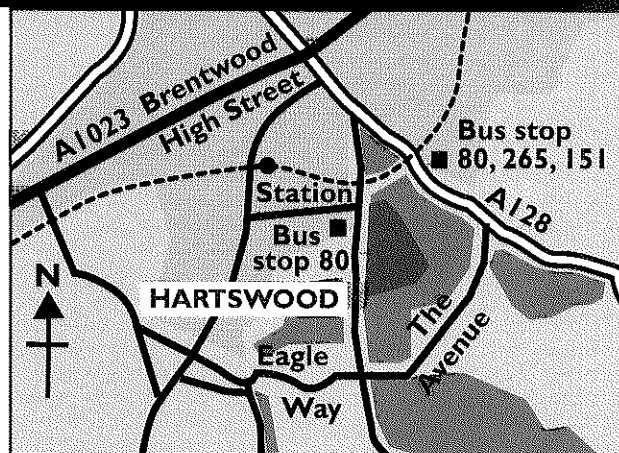
Brentwood  
Countryside  
Management  
Service

**H**ARTSWOOD is a large, attractive woodland near Brentwood and a haven of peace and tranquillity with much wildlife.

In 1994 an Access Trail was opened so that more people could enjoy the woodland. Wide, surfaced paths take you through the woodland and are linked by innovative features such as wooden junctions and bridges. The trail is accessible for electric scooters, manual and electric wheelchairs and pushchairs during the summer and dry weather. It can be used with care during the winter.

### PARKMOBILITY

As part of Shopmobility you can borrow an electric scooter and electric wheelchair free of charge to use on the Trail and around King George's Park. Telephone 01277 264690 to book and collect them from near the golf shop. The scooter can be used on the woodland trail, whilst the wheelchair is more suited to the park.



### PARKING

There are several car parks in King George's Park. The main car park off Ingrave Road has **two accessible reserved bays** for orange badge holders. It is busy at weekends and school holidays, but during quieter times minibuses with tail lifts should be able to unload safely. The car park off Hartswood Road does not contain reserved parking bays, but has a tarmaced surface.

### PUBLIC TRANSPORT

Shenfield station is 2.5km away and all platforms are accessible. Brentwood station is closer but is only wheelchair accessible from one platform. For information and help with boarding call 0645 505000.

Buses run from both stations but few are wheelchair accessible. Phone 01245 262828 (nos. 80 & 151), or 01708 631001 (no. 265). There is no Sunday service.

### WAYMARKED PATHS

You can choose from several paths. For convenience three colour-coded routes are suggested and waymarked. At a leisurely pace they should take:

Purple - short route:  $\frac{3}{4}$ km, 20mins

Green - middle-distance:  $1\frac{1}{2}$ km, 35 mins

Black - longest route:  $1\frac{3}{4}$ km, 45 mins

### SURFACE CONDITIONS

The trail was designed to be accessible for wheelchairs during the summer and dry weather. Most of the trail is surfaced using a stone which blends in with the woodland and forms a hard surface. In some places there may be small amounts of loose stone and uneven patches.

### SLOPES

There are very few slopes along the trail. The sections where the gradient is between 1 in 12 and 1 in 20 are marked on the map.

### SEATS

Seats are provided along the trail and are marked on the map. Three of these are benches and the others are resting places built into bridges.

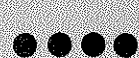
Green  
Woodpecker





# HARTSWOOD ACCESS TRAIL

## KEY



Purple Route:  
3/4km - 20mins



Green Route:  
1 1/2km - 35mins



Black Route:  
1 3/4km - 45mins



Gradient up to 1 in 20  
→ uphill



Gradient up to 1 in 12  
→ uphill



Bridge with rest



Bench



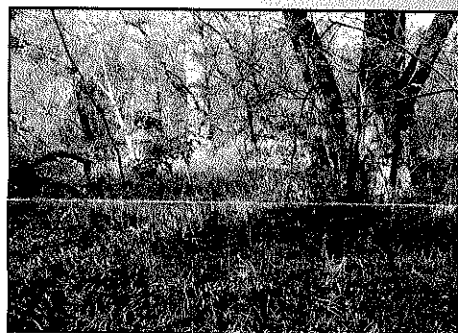
Parking



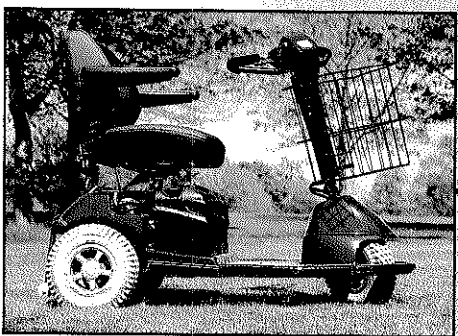
Toilet for disabled



Refreshments



Wander through the bluebells in May. In summer the pond comes alive with life. Look out for flashes of colour as dragonflies and damselflies dart across the pond.



The electric scooter available from King George's Park.

Golf Course

Orange badge holder spaces

Crazy golf

Play area

Entrance to King George's Park

Entrance to King George's Park

N